

CITY OF MURRAY CONTROL MONUMENT CARD

DESIGNATION: D6 GPS

TYPE: CONCRETE MONUMENT W/ CITY DISK

DATE SET: JUNE 1997 QUAD: MURRAY, KY.

HORIZONTAL DATUM: NAD-83 VERTICAL DATUM: NAVD-88

STATE: KENTUCKY COUNTY: CALLOWAY ZONE: KY. S 1602

NORTHING: 1752441.32 FT

EASTING: 890494.42 FT

ELEVATION: 513.66 FT (GPS)

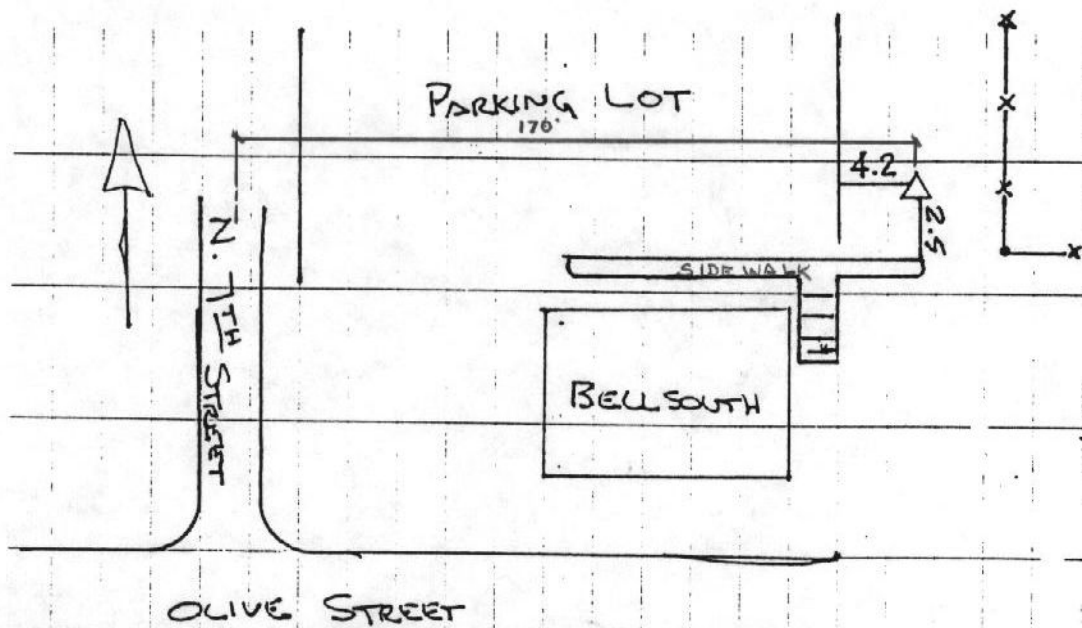
LATITUDE: N 36°36'47.38371" LONGITUDE: W 088°18'19.10332"

SCALE:

CONVERGENCE:

PLANE AZI. TO AZI. MARK:

To Reach: From the intersection of Olive St. and N. 7th St., go north along N. 7th St. for 300 ft. to the station on the right.



NOT TO SCALE



GRW Aerial Surveys, Inc.
801 Corporate Dr. Lexington Ky. 40503
(606)223-3999